

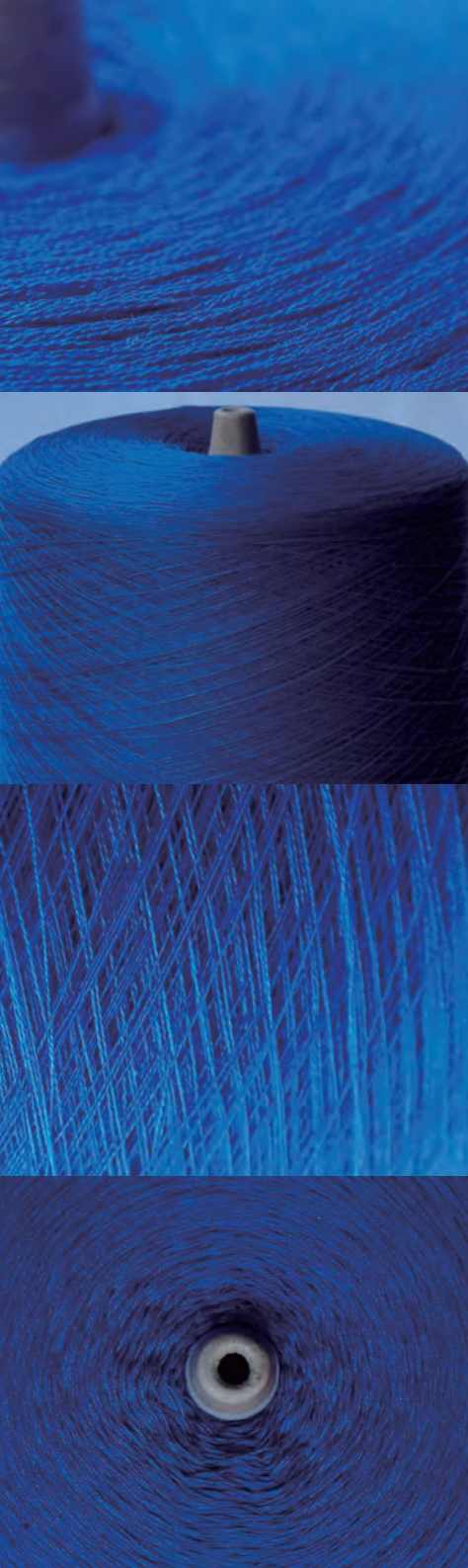


**FISCO**  
continuous mercerized yarn



SHIKIBO LTD. RAW MATERIAL & YARN SALES SEC.

※FISCO is a trademark of shikibo ltd. registered in Japan.  
※Unauthorized reproduction of the contents of this brochure is prohibited.



# What is FISCO

---

- The continuous mercerized yarn one and only in Japan processed at SHIKIBO Konan
- Made of well-selected raw cotton
- Silk-like glossiness
- High dyeing affinity ensures long-lasting beauty with minimal color fading after washing

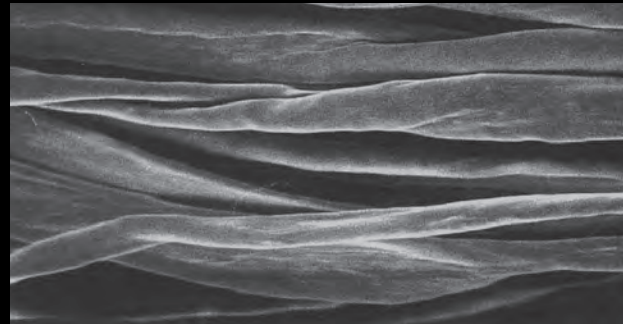


# What is Mercerization

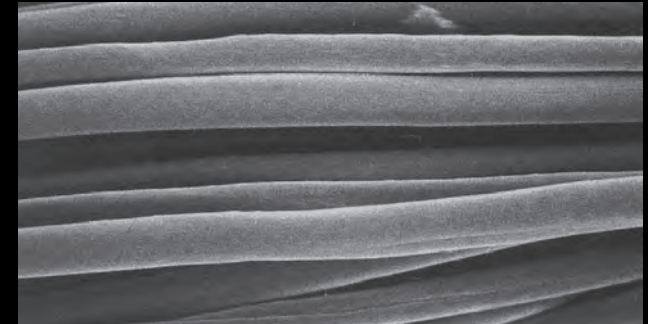
The fiber cross-section shape changes its form from flat to circular by reforming cellulose fibers.

## Comparison photos of two kinds yarn

500×



Regular



FISCO

## FISCO How mercerization is processed



① Singeing

Remove fluff from the yarn surface one by one.



② Bundling

Bundle yarn in units of several hundred like a rope for continuous processing.



③ Mercerization

Apply alkaline treat to the yarn.



④ Drying

Dry yarn in low damage condition.



⑤ Untying

Untie the bundle into individual yarn.



⑥ Finish

Wind the yarn into the specified shape.

The logo for FISCO is rendered in a gold, outlined font. The letters 'F', 'I', and 'S' are tall and narrow, while the 'C' and 'O' are wider and more rounded. The 'O' is a simple circle. The background of the left panel is a dark blue with a complex, woven pattern of lighter blue lines.

continuous mercerized yarn

— Features —

1. Silk-like glossiness
2. Few fluff
3. High strength
4. High dyeability





## 1. Silk-like glossiness

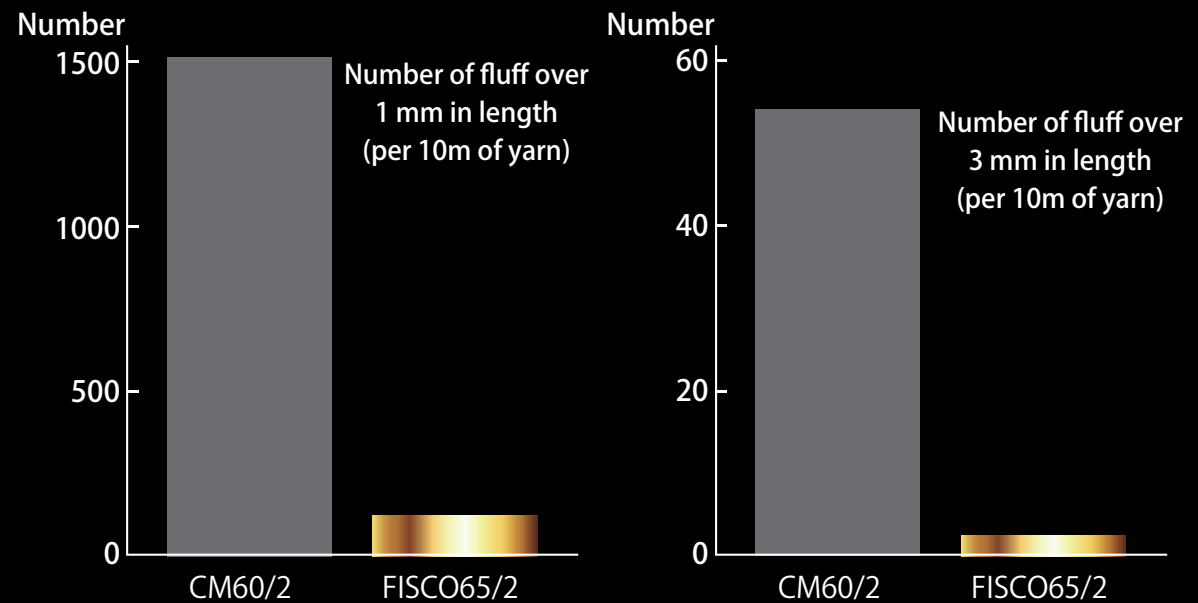
---

The round fiber surface reflects a lot of light and makes the cotton yarn shine.



## 2. Few fluff

The surface of the yarn is clean with little fluff.

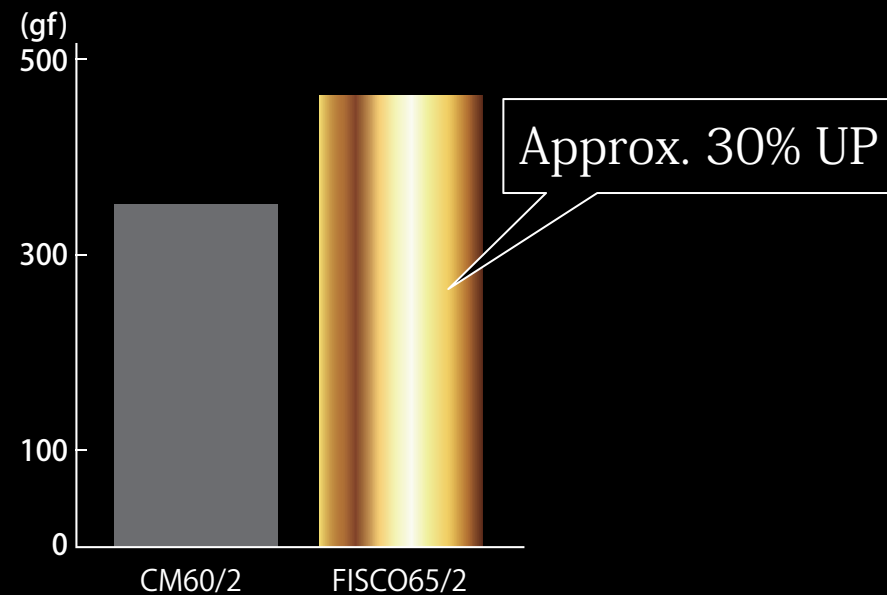


Test method: Fluff JIS L 1095B



## 3. High strength

The reforming of cellulose fibers improves yarn strength.

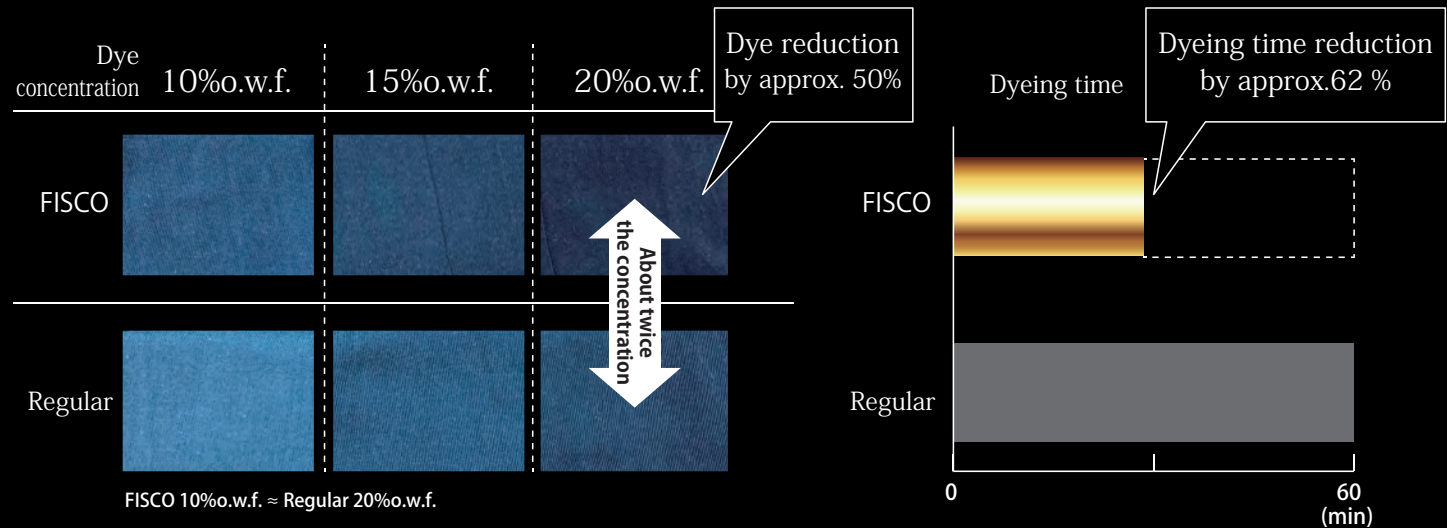


Test method: Tensile strength JIS L 1095

## 4. High dyeability

High colorability that dyes at approx. twice the density of regular yarn.

Reduces the amount of dye used and dyeing time.





## Main uses



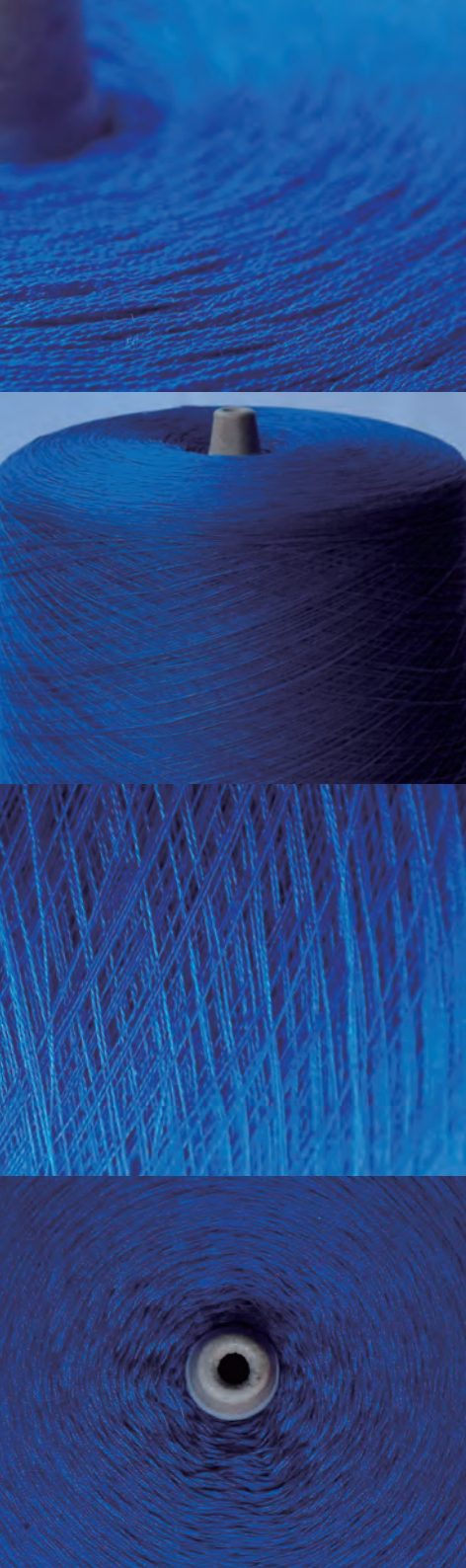
Socks, T-shirts



Towel



Sub-materials



# FISCO

continuous mercerized yarn

## Lineup

30/2

40/2

50/2

60/2

80/2

100/2

Contact information \_\_\_\_\_



shikibo

SHIKIBO LTD.

RAW MATERIAL & YARN SALES SEC.

3-2-6 Bingomachi, Chuo-ku, Osaka

ZIP541-8516, Japan

E-mail [ito@shikibo.co.jp](mailto:ito@shikibo.co.jp)

No.10  shikibo

20250213