

High-durability commercial printing



~ Long-lasting beauty ~

Facilities

We always deliver clean products to your guests!!  
The difference in the degree of color fading is small, reducing the time and effort to **make rearrangements during making!!**

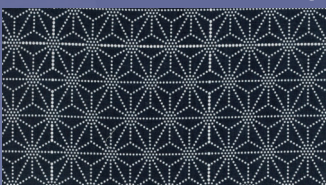
Laundry companies

**Reduction of waste loss** due to color fading!!  
**Prevents** color transfer to other objects to be washed and **re-contamination** of white cloths!  
Even for dark colors, **the number of times of initial washing is reduced!!**

### Comparison of pigment falling-off due to industrial washing

APENINO

0 instances of washing



50 instances of washing

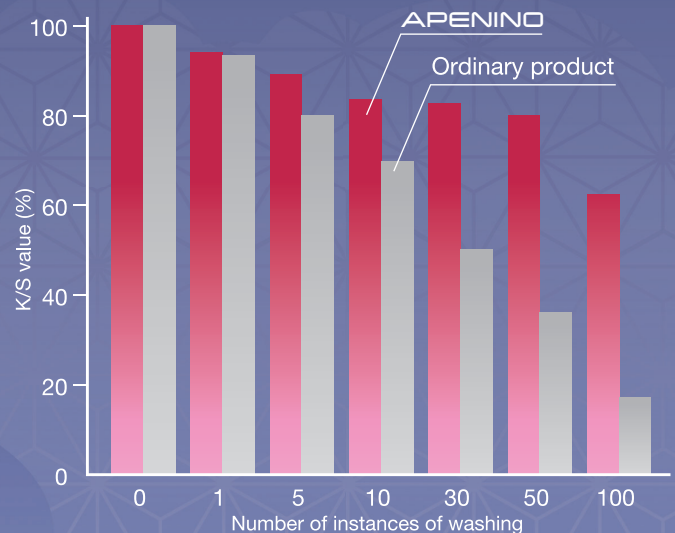
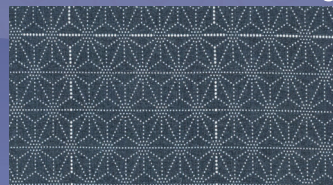


Ordinary product

0 instances of washing



50 instances of washing



«Test method»

After industrial washing (containing a chlorine bleaching agent) was carried out for APENINO and the cloth for comparison, the comparison ratio (weighting factor K/S value) with respect to the reference color before washing was measured and the falling-off of the pigment was compared.

\*The weighting factor K/S value is a value representing the concentration ratio to the reference color. The value is smaller if the concentration is less than the reference value (100).

Even after repeated washing, the color does not fade easily, so the product life is longer.



SHIKIBO LTD.

3-2-6 BINGOMACHI, CHUO-KU,  
OSAKA 541-8516 JAPAN

- The data described in this brochure are the results with our representative fabric.
- Unauthorized reproduction of the contents of this brochure is prohibited.